

University of Colorado Monthly Compliance Meeting



August 12, 2010

Today's Agenda

- Jo's Announcements
- Kris's Announcements
- Alice Swanson's Announcement
- Legislation & Interps related to Parking
- Legislation related to Bylaw 11-Coaching Limitations
- New to CU-reimbursement for musicals/plays/concerts & the process
- Pac-10 Organizational Chart-Dr. Clough

Jo's Announcements

- Fall Team Meetings – 8/23 & 8/24 @ 5PM Make sure your SAs fill out the online paperwork-also your EE & PM students must attend one meeting as well.
- Remember to sign the Electronics Communications form monthly in your folder
- Recruiting Policy – Head Coaches must sign off
- Submit roster changes (add/changes) ASAP- remember walk-ons/transfers/international must complete a checklist before they can be cleared.
- Healthy Kids Day – 8/22 @ 11:15am-2pm
- Welcome Back Picnic – 8/22 @ 5:30pm

Kris's Announcements

New Student-Athlete Orientation
Sunday, August 22

CU Orientation Sessions in August

Alice Swanson's Announcement



Legislation & Interps Related to Parking

- Parking for **official** visits
- Parking for **unofficial** visits
- Don'ts for **unofficial** visit parking
- Parking for practice
- Actual and necessary travel expenses



Parking for official visits

- Parking on the CU campus can be provided for PSAs and their immediate families on Official visits.
- If CU hosts an NCAA event during an official visit, CU would be prohibited from providing parking arrangements for PSAs who are attending the NCAA tournament or postseason FB game (same as the comp ticket legislation).

Parking for Unofficial visits

- CU may not provide parking on the CU campus for PSAs to use while attending an athletics event during an Unofficial visit.
- But CU can provide transportation for campus tours and tours of on- or off-campus practice or competition sites in the PSA's sport (within a 30-mile radius) during the PSAs unofficial campus visit.
- For example, if the PSA parks on campus in an allowable space, you can provide transportation to tour our facilities & athletics facilities in that sport.

Don'ts for unofficial visit parking

- Do not ask Parking Services to waive/forgive a parking ticket for a PSA.
- Do not buy a pass from one of the kiosks in place of a university pass.
- Do not allow or make arrangements for a PSA to park for free in a space where they are required to pay.

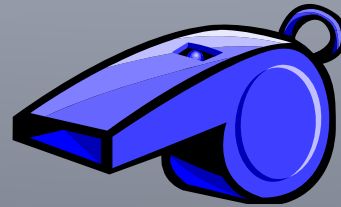
Parking for practice

- We cannot reimburse SA s for mileage to/from their practice sessions—e.g. Colorado National Golf Club.
- It is permissible for our SA s to purchase parking permits in lots that are close to their practice facility.
- Parking can be paid for if the competition or practice is away from home.
- Parking can be paid for if the practice is within the state.

Actual and necessary expenses

- Parking can be provided if the student-athlete is not traveling with the team.
- Parking can be provided if an individual is competing on behalf of CU.
- Parking costs can be reimbursed if the SA is traveling to a media function.

Coaching Categories



Coaching Categories

In order to coach (paid or unpaid), an individual must be designated as one of the following:

- Head or assistant.
- Undergraduate student-assistant coach.
- Volunteer coach (not in FB/BB).
- Graduate assistant (GA) coach.

Head or Assistant Coach

- Designated to perform coaching duties (paid or unpaid).

Undergraduate Student- Assistant Coach

- Must have exhausted eligibility or be injured to the extent that he/she will not participate again.
- Enrolled at institution where SA **most recently** participated in athletics.
- **Enrolled as full-time undergraduate in first baccalaureate degree program.**
- May only receive expenses for away games (i.e., room, board and transportation).

Undergraduate Student-Assistant Coach

- No compensation other than financial aid that could be received as a SA.
- Cannot recruit off-campus or perform recruiting functions.
- Cannot scout opponents.
- May list four names on comp admission pass list
- Limited to same number as countable coaches for sport (e.g. MBB/WBB has 4 coaches—can have up to 4 undergrad student assistant coaches).
- No five-year eligibility time limit (but must be pursuing first baccalaureate degree).

Effective August 1, 2010 (Proposal No. 2009-12-A)

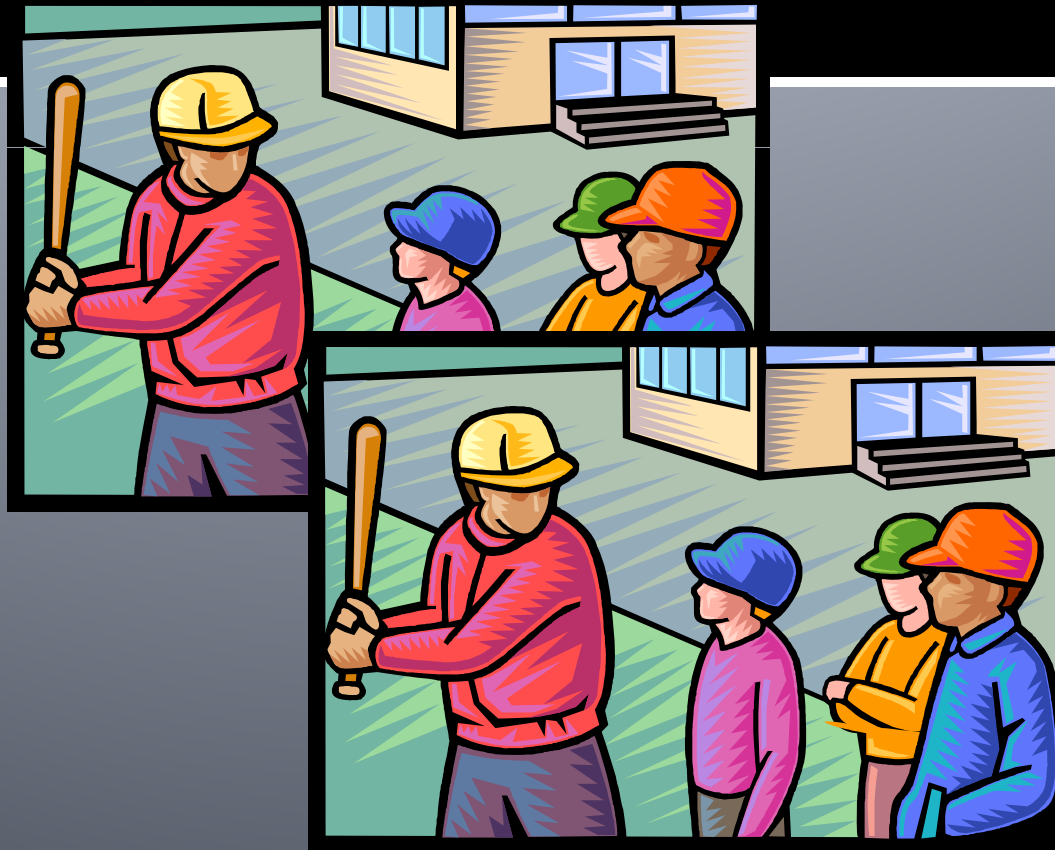
Volunteer Coach

- One per sport (none in football or basketball).
- No compensation permitted.
 - This prohibition includes expenses for attendance at coaches conventions, conferences, etc.
 - Exceptions are camp compensation and compensation from institutional source outside of athletics for duties actually performed.
- May receive two complimentary tickets to home contests in coach's sport only.
- May receive expenses for away games (i.e., room, board, parking and transportation).

Volunteer Coach

- Cannot recruit off campus or perform recruiting coordination functions.
- Cannot scout opponents.
- May receive championship awards.
- May receive complimentary meals incidental to team's activities or on official visits.

Limits on Number of Coaches



Limits on Number of Coaches

- Limits for number of coaches that may be employed in each sport.
- Limits for number of coaches who may contact or evaluate PSAs off campus.
- Commonly referred to as “countable coaches”.

Countable Coaches

- Participate in coaching the team in any of the following:
 - Practice, games, or organized activities directly related to the sport.
- Must count against coaching limitations as soon as coaching occurs.
- Replacement of countable coaches.
 - Due to extenuating circumstances/Olympic team coaching/pregnancy – **Must work right with & document change with Compliance.**

Exceptions to Coaching Limits

- Commonly referred to as “non-countable coaches.”
- Strength and Conditioning Coaches.
 - May only conduct flexibility, warm-up and physical conditioning activities (counts towards CARA).
 - No limit on number per sport.
- Undergraduate student-assistant coaches.
 - Limited to number of countable coaches per sport.
- Volunteer coaches.
 - Limited to one per sport (none in football or basketball).

Annual Designation Form

- Form requires head coach to list all individuals associated with the program in coaching and non-coaching roles (paid and unpaid)
 - Supplemental forms for the following:
 - Volunteer Coach
 - Undergraduate Student Assistant Coach(es)
 - Manager
- ***NOTE:** All individuals also need to pass a background check per CU policy

Noncoaching Staff Members

Noncoaching Staff Members

- Institutional staff involved in non-coaching activities do not count provided:
 - Not identified as coaches;
 - Do not engage in any on-or off-field coaching activities; and
 - Not involved in any off-campus recruitment of PSAs or scouting of opponents.

Noncoaching Staff Members with Sport Specific Responsibilities

- Proposal No. 2009-15.
- May participate in organized activities involving only coaching staff.
- May have administrative duties.
- May not participate in instructional activities with SAs.
- May not participate in any on-court or on-field activities.
- May not participate or observe SAs who are engaged in non-organized voluntary athletically related activities.

Noncoaching Staff Members with Sport Specific Responsibilities

- May attend and participate in coaches meetings.
- May analyze video of CU's or opponent's team.
- May attend practice/competition.
- May perform administrative duties during practice/competition.

Noncoaching Staff Members with Sport Specific Responsibilities

- May not participate in practice or competition, skill instruction or pregame warm up activities.
- May not perform recruiting coordination functions (evaluation/selection of PSAs).

Managers

- Must perform traditional managerial duties (e.g, equipment, laundry, hydration).
- Must be a full-time student.
 - Exception for final term of enrollment.
- May participate in **limited** on-court activities during practice with SAs (e.g., assist with drills, warm-up activities – see next slide for more details). Note: May perform “limited” activities on regular basis
- May not provide instruction to SAs.
- May not participate in CARA as SAs or practice players would typically participate.

Effective August 1, 2010 (Proposal No. 2009-14-B).

Managers

- “Limited” – refers to the type of activities performed, not the frequency of activities.
- May perform limited activities on regular basis.
- Examples of limited activities:
 - Throwing bounce passes;
 - Throwing batting practice;
 - Shagging balls; and
 - Signaling in plays at direction of coaching staff.

Use of Outside Consultants

- Temporary training to coaching staff only.
- No interaction with SAs permitted.
- No involvement with on- or off- field coaching activities.
- May observe practice, but not participate.
- Be sure to complete the *Outside Consultant Compliance* form out in advance of the person assisting.

Official Interpretations (7/2/03, 1/8/03)

Sport Psychologist

- May not engage in on- or off-field coaching (e.g., use equipment, review game films, set-up offensive or defensive alignments when meeting with the SAs, meetings involving coaching activities).
- **May engage in "mental imaging" with a SA without being considered a countable coach, provided no coaching activities occur.**

Sport Psychologist

- May evaluate a SA during practice only for the purposes of assisting the SA in off-court or off-field non-coaching activities (e.g., mental imagery) directly related to the sport.
- Remember, if a SA is required to meet with the sports psychologist, such a meeting is considered a CARA.

Question No. 1

- Which of the following individuals may signal in plays to SAs during a game?
- Head/Assistant Coach
- GA Coach
- Undergraduate Student-Assistant Coach
- Strength and Conditioning Coach
- Director of Operations
- Manager

Answer No. 1

- All may signal plays to SAs during a game except for:
 - Strength and Conditioning Coach
 - Director of Operations
- NOTE: Manager may only signal plays at the direction of a coaching staff member

Question No. 2

- Which of the following individuals may participate in pre-game warm ups with SA?
- Head/Assistant Coach
- GA Coach
- Undergraduate Student-Assistant Coach
- Strength and Conditioning Coach
- Director of Operations & other non-coaching staff members
- Manager

Answer No. 2

- All may participate in pre-game warm ups except for:
 - Director of Operations & all other non-coaching staff members. These folks cannot be on the field/court—must stay on the sidelines.
 - NOTE: Manager may only participate in limited activities

Question No. 3

- What individuals may participate in coaches meetings?
- Head/Assistant Coach
- GA Coach
- Undergraduate Student-Assistant Coach
- Strength and Conditioning Coach
- Director of Operations
- Manager

Answer No. 3

- All may participate in coaches meetings except for:
 - Strength and Conditioning Coach
 - NOTE: If subject turns to evaluation of PSAs then Director of Operations & other non-coaching staff members should leave the meeting. Obviously, best to leave that agenda item to the very end of your staff meeting.

Recruiting Coordination Functions

Recruiting Coordination Functions

- Specific functions (except routine clerical tasks) must be performed by head or assistant coaches:
 - Activities involving athletics evaluations and or selection of PSAs; and
 - Telephone calls to/from PSAs.

Recruiting Coordination Functions - Exception

- After PSA signs NLI or other written commitment* or after May 1 of PSA's senior year in HS if CU has received financial deposit.
 - Noncoaching staff members and non-countable coaches may make/receive telephone calls to/from PSAs.

*For a PSA who is not eligible to sign a NLI.

Recruiting Coordination Functions - Exception

- Noncoaching staff members and non-countable coaches may make/receive telephone calls to/from PSA during official visit transportation and official visit.
- Athletics staff may make unlimited calls to PSAs (or individuals accompanying PSA) during official visit transportation and official visit.

Effective August 1, 2010 (Proposal No. 2009-18)

Recruiting Coordination Functions – Camp and Clinic

- The sport's Camp Director may return calls PSAs in regard to camp/clinic logistical issues—e.g. medical release form, transportation, meals, etc.
- May not include any recruiting conversation or language.
- May not solicit camp/clinic attendance.
- No limit on number of calls or e-mails.
- Can initiate or receive calls or e-mails to/from PSAs.

Official Interpretation (10/2/2009)
Educational Column (5/7/2009)

Off-Campus Recruiting at Any One Time

Off-Campus Recruiting At Any One Time

- One coach may leave campus before another coach returns, provided the total number of coaches recruiting at any one time does not exceed the permissible number.
- Replaced coach must complete recruiting activities before another coach may begin.
- Replaced coach must return to campus before additional recruiting occurs.

Off-Campus Recruiting At Any One Time – Basketball Exception

- During July evaluation period only.
- Replaced coach not required to return to campus prior to engaging in additional off-campus recruiting activities.
- Limit of three coaches engaged in off-campus recruiting activities each day.
- General rule or exception may be used at anytime during July evaluation period.

Staff Interpretation (7/1/09)

Scouting of Opponents

Scouting of Opponents

- Not permissible in basketball.
- CU cannot pay expenses incurred by staff to scout opponents.

**Reminder of
New Legislation
Effective August 1st**

Prior to Offer of Aid

- CU shall not provide a HS, preparatory school or transfer (if applicable) PSA a written offer of athletically related financial aid until he/she has completed the amateurism certification questionnaire administered by the NCAA Eligibility Center.

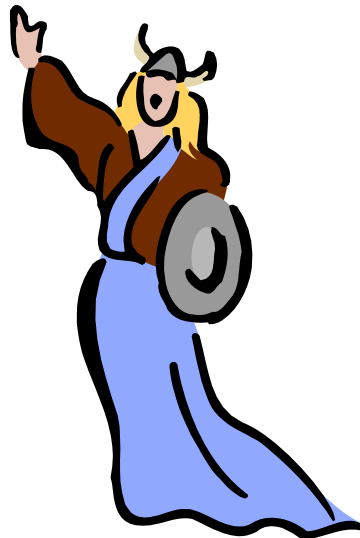
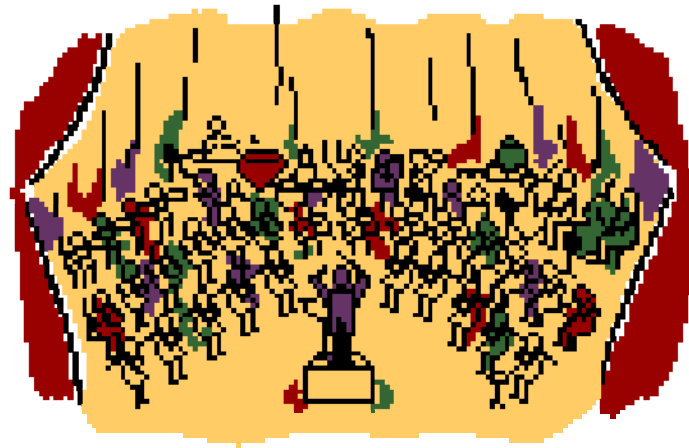
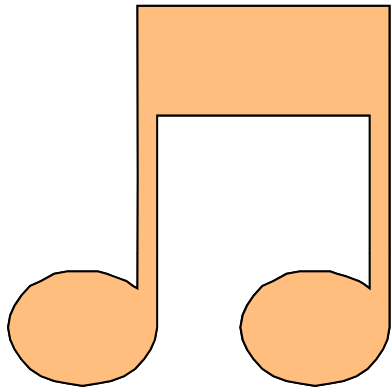
No Aid Offers...

- Prior to August 1st of a PSA's senior year in high school, an institution shall not provide a written offer of athletically related financial aid or indicate in writing to the PSA that an athletically related grant-in-aid will be offered by the institution.

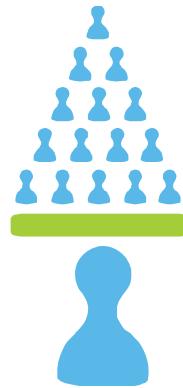
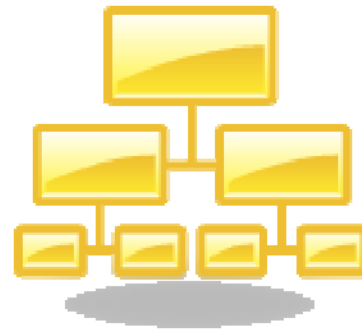
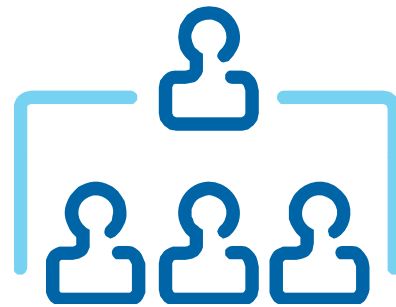
Dead Period Exception

- A PSA who has signed an NLI is permitted to make an unofficial visit during a dead period.
- For a PSA who is not eligible to sign the NLI (e.g., four-year college transfer), the prospect must have signed the institution's written offer of admission or financial aid, or submitted a financial deposit in response to an offer of admission.

Process for Reimbursing SAs for Attending Required Special Events



Pac-10 Organizational Chart



Questions?